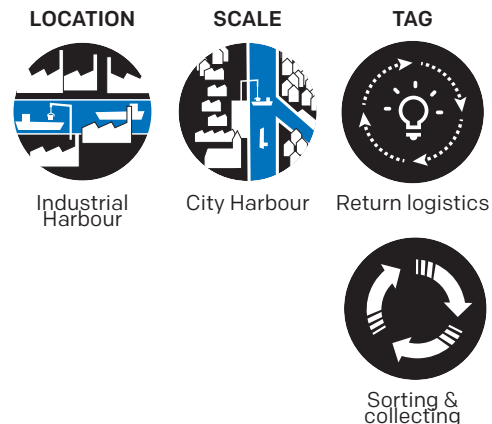
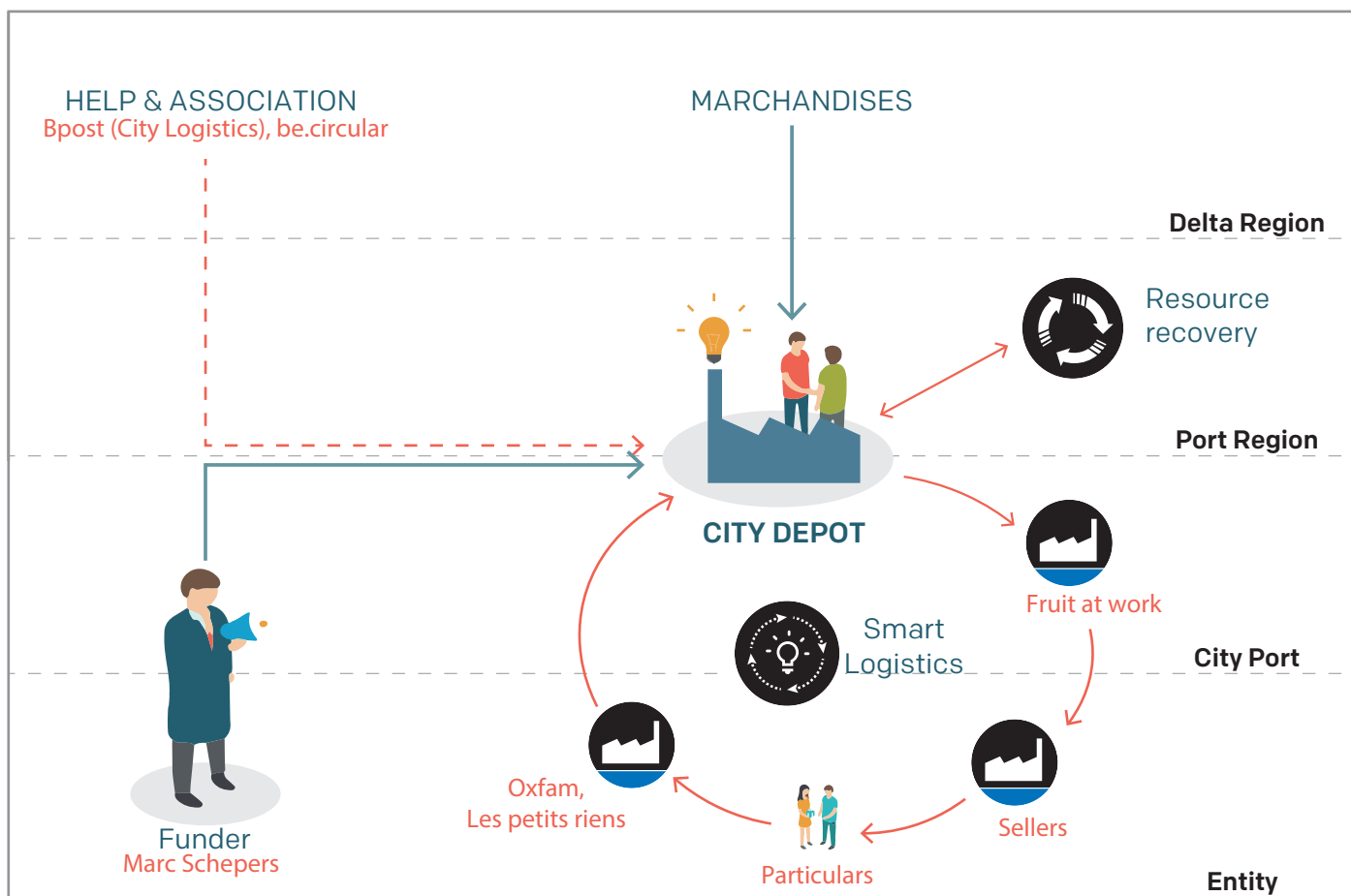


CITY DEPOT BRUSSELS



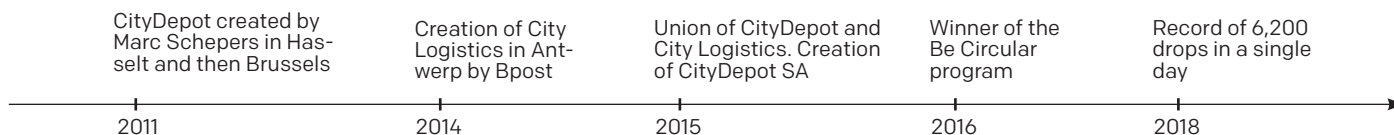
“From its neutral and open platform to all stakeholders, CityDepot offers “carpooling of goods” to and from the city and proves that it can be much more ecological and economical to work together than to transport your goods separately.”



INTERRELATIONSHIP

Citydepot collects the goods at the entrance to the city, stores them, organizes them and then delivers them in the city centre to its customers (companies with recurring orders, individuals...)

TIMELINE



Intelligent urban delivery



CityDepot's consolidation centre in Brussels.



Use of clean vehicles.

What happens here?

CityDepot is a Belgian company operating in several large cities that offers a solution for the sustainable distribution of goods. As part of the last mile logistics, it concentrates goods flows at the entrance to cities and delivers them in an optimized and consolidated way to the urban centre using more suitable and cleaner vehicles (bicycles, vans...) The company also proposes to collect, store or assemble goods in a flexible way before delivering them to the city. The project aims to close the loop of goods flows by stimulating the integration of reverse logistics systems by Brussels economic actors.

What are the ambitions?

Reverse logistics projects will be implemented by optimizing the use of available space in the delivery truck and by recovering resources/waste during these same deliveries of goods. The final objective is to be able to gather at the consolidation centre a sufficient quantity of flows that can be valued by local and social economy actors (such as the project partners: Les Petits Riens, Oxfam, etc.). Thus CityDepot's objectives are found in value creation, at the intersection of ecology, social and economic aspects. The efficient distribution of goods in cities reduces traffic and related pollution and increases the safety, quality of life and comfort of local traders.

What is the relation with the port?

Citydepot's strategic position at the port at the gateway to the city allows them to store the goods delivered and to operate over large areas. Proximity to water will allow them, for example, as the Brussels team points out, to have some of the goods destined for the city centre delivered by water (unlike in Antwerp, some of the goods destined for the city centre are already delivered by water.)

Who is behind it?

As a Bpost branch, this project is supported by the Brussels-Capital Region as part of the «be circular be.brussels» call for projects of the Regional Programme in Circular Economy. Indeed, as the winner in 2016, he received financial assistance and was also supported by Impulse.brussels in the search for investors and in the procedure for introducing the environmental permit.

What is the relation with the city?

Proximity to the city is crucial because the short distances to be covered allow the break-up into small, practical and ecological transports.

Sources

<https://www.citydepot.be>

<http://www.circulareconomy.brussels/citydepot-connecteur-de-leconomie-circulaire/>