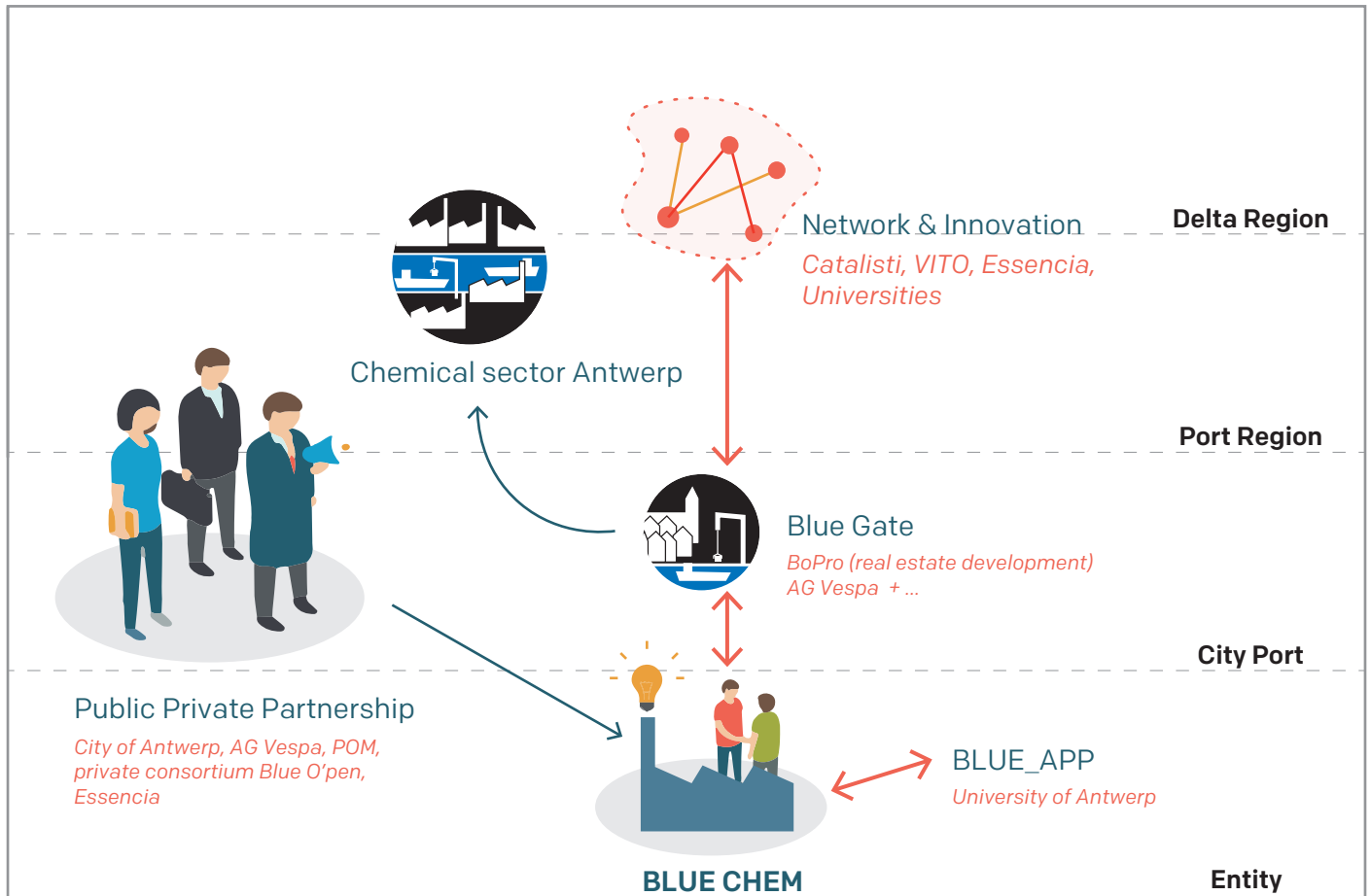
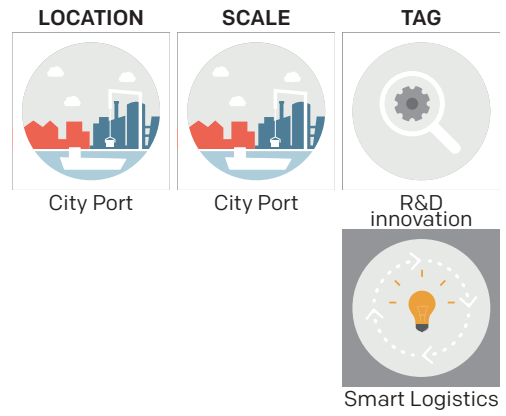


BLUE CHEM ANTWERPEN



INTERRELATIONSHIP

...

TIMELINE

More information



Incubator for sustainable chemistry.

What happens here?

The incubator will cover more than 3300 m² and will provide a mix of flexible workspaces for starters and individual offices and laboratories for SMEs, sub-projects of large companies and knowledge institutes. The incubator will contain all connections to set up laboratories, the so-called 'plug-and-play' model. Here, renewable chemicals and the valorisation of waste and residual streams are approached with the large scale industrial processes of the port on the mind.

What is the relation with the port?

The port of Antwerp has one of the biggest chemical clusters in the world. The incubator tries to provide an innovative environment, with Flemish universities and knowledge network, in relation to these international chemical companies.

What is the relation with the city?

No direct links or synergies are created with the (surrounding) city.



The incubator is the result of a PPP.

What are the ambitions?

To accelerate the transition of the chemical industry to a more sustainable circular operation. To connect new innovations (knowledge institutes) with the existing chemical companies active in the port.

Who is behind it?

Knowledge institutes, industrial federations and public partners. Through a PPP, with public partners AG Vespa, PMV, city of Antwerp and POM Antwerpen working together with the consortium Blue O'pen, Essenscia (federation chemistry) and knowledge institutes like VITO and universities.

Catalisti, the new Flemish spearhead cluster for chemistry and plastics, is taking an active role in BlueChem to start up and support new promising innovation projects. There is also an important synergy with Blue_App, an open innovation hub for research projects of the University of Antwerp in the field of sustainable chemistry (to be built).